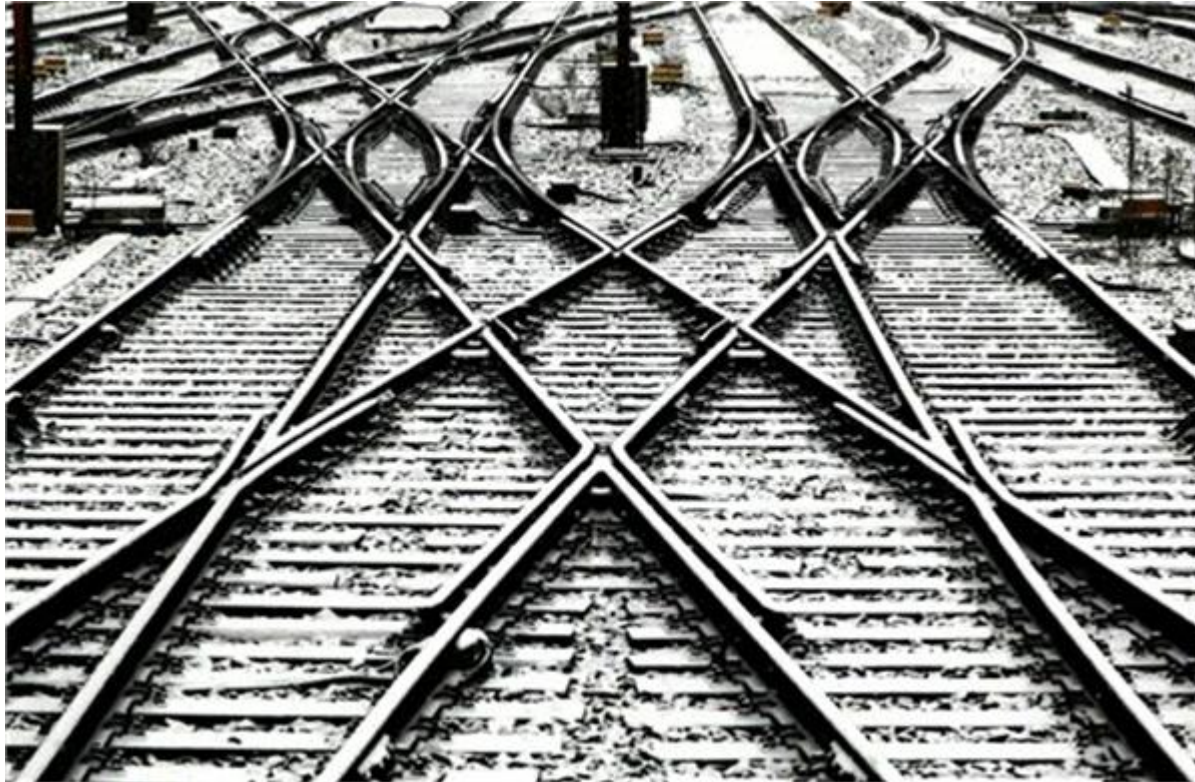


Making health and safety simple



Legislation – Duty of Care

As a business, you must so far as is reasonably practicable **look after**:

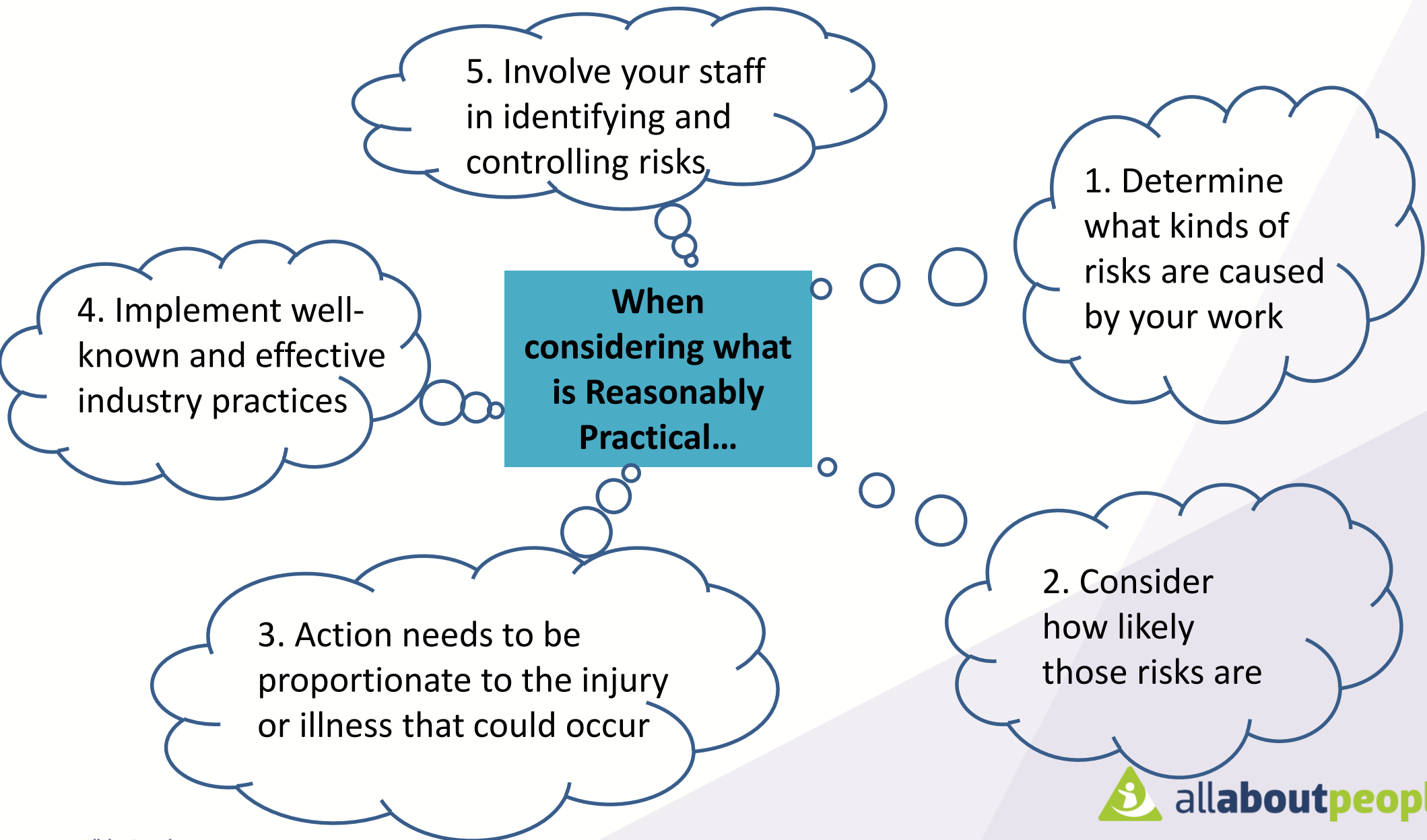
- The health and safety of your **workers** and **any other workers** you **influence or direct**
- The health and safety of **other people** at risk from any work you carry out
- -e.g. customers, visitors, public

‘All Reasonably Practicable Steps’

- First consider whether you can reasonably eliminate risks; if not
- Take **reasonably practicable steps** to minimise risks



'REASONABLY PRACTICABLE'

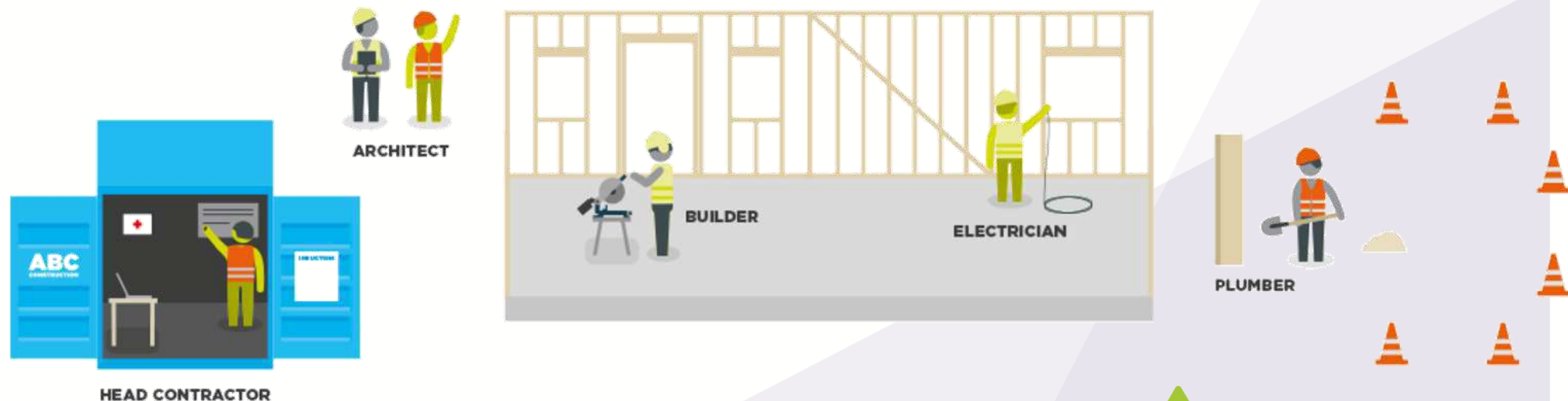


This Means...

- Identify types of risks caused by your work
- Consider how likely those risks are
- Take appropriate action that is proportionate to the injury or illness that could occur
- Implement well-known and effective industry practices
- Involve your staff in identifying and controlling risks

It Also Includes Overlapping Duties

- When the work of two or more businesses overlap, they must **consult**, **co-operate** and **co-ordinate activities** to meet their health and safety responsibilities to workers and others.



WorkSafe's Approach



Where do you start?

Know your health and safety **Risks** ...



... manage them **proportionately**



Think About Your Top 3 Hazards



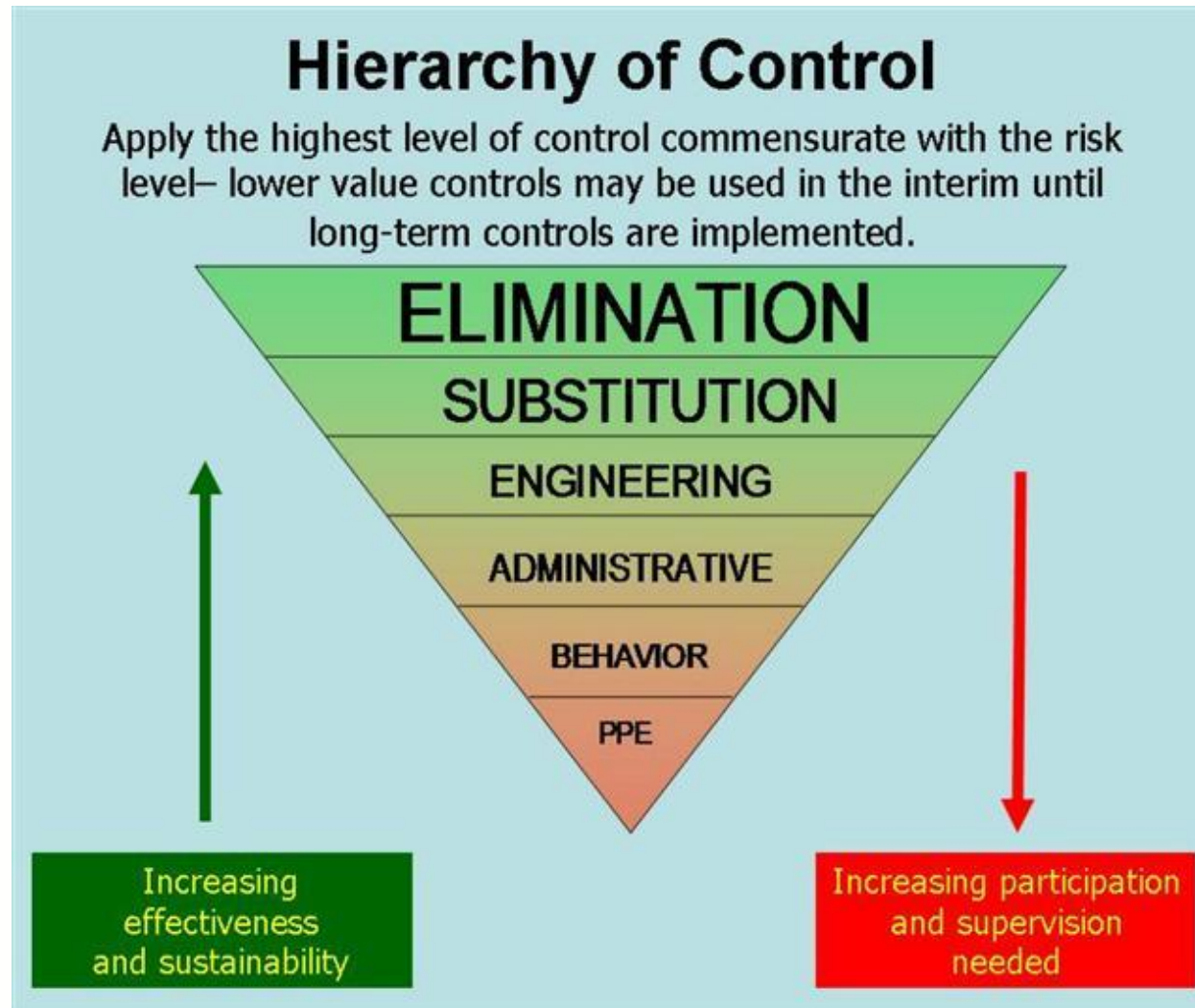
This means...



What?

- Put together a risk register
- Focus on the big stuff
- Put together a:
 - Safety Plan
 - Emergency Plan
- Provide Training
- Provide safe and suitable Gear
- Communicate with your Workers

Hierarchy of Controls



This in turn means...

- You show good leadership
- You engage with your workers

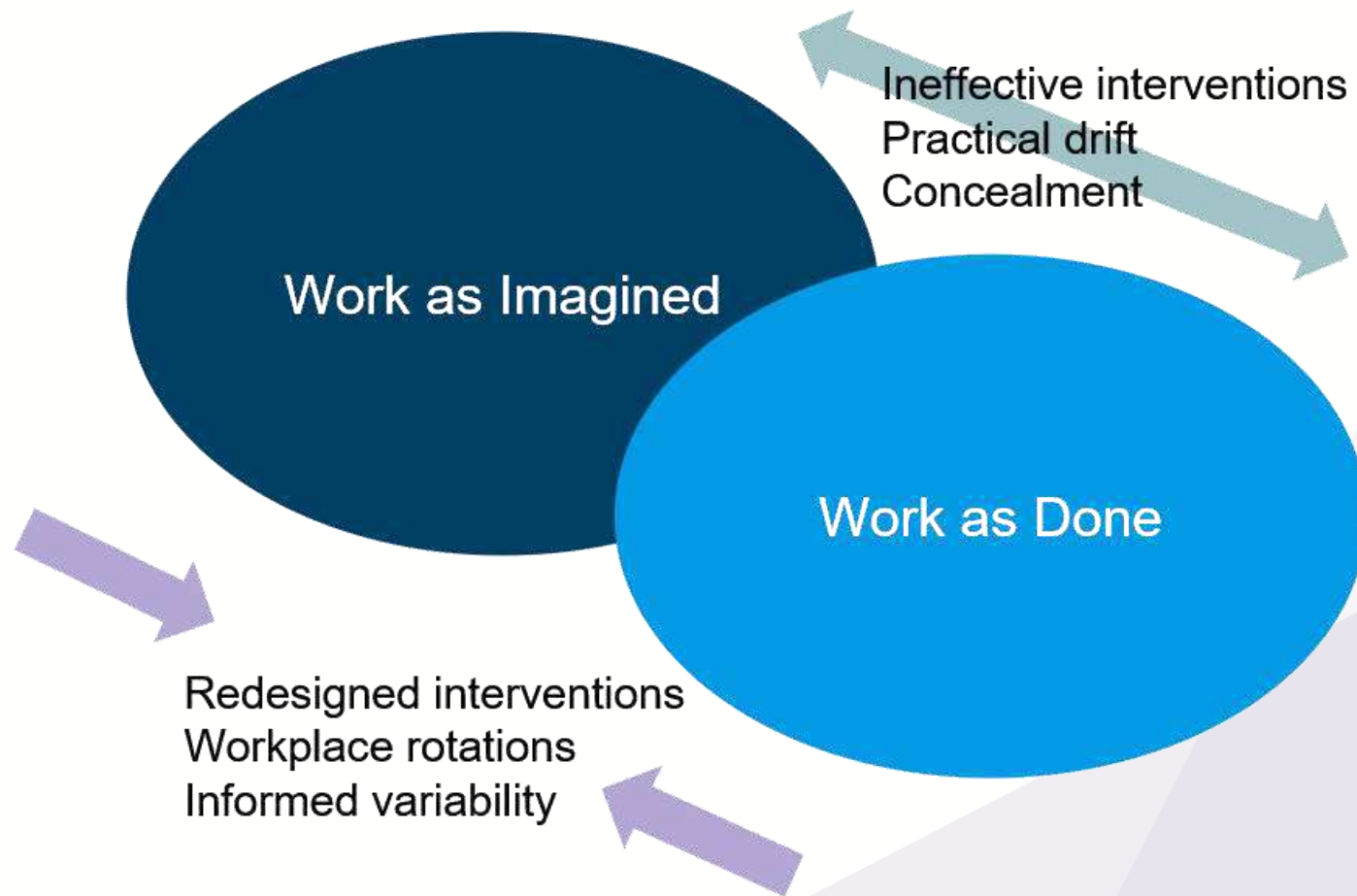




Take-away

- Hold a team meeting with a difference
- Ask the following questions:
 - Do you have enough resources for your job?
 - When do you take shortcuts on your job?
 - What is our most significant risk today?
 - Are we managing it well?
 - What do we need to change to make it safer?

Safety as Imagined – Safety as Done



People doing job have best solution



From here...

